
Product Datasheet

PPY antibody (orb19027)

Description

Goat polyclonal antibody to PPY

Species/Host

Goat

Reactivity

Canine, Human, Mouse, Rat

Conjugation

Unconjugated

Tested

ELISA, FC, IF, IHC, WB

Applications
Target

Pancreatic Polypeptide / PPY

Preservatives

Supplied at 0.5 mg/ml in Tris saline, 0.02% sodium azide, pH 7.3 with 0.5% bovine serum albumin. Aliquot and store at -20°C. Minimize freezing and thawing.

Storage

Aliquot and store at -20°C. Minimize freezing and thawing.

Note

For research use only

Application notes

ELISA: Peptide ELISA: antibody detection limit dilution 1:32000. IHC: In paraffin embedded human pancreas, shows strong cytoplasmic staining of rare cells located at the periphery of islets of Langerhans. Recommended concentration, 3ug/ml. WB: Preliminary experiments gave an approx 35-38kDa band in human pancreas lysates after 1 µg/ml antibody staining. Please note that currently we cannot find an explanation in the literature for the band we observe given the calculated size of 10.5kDa according to NP_002713.1. The 38kDa band was successfully blocked by incubation with the immunizing peptide.

Protein Sequence

TRPRYGKRHKEDT

Clonality

Polyclonal

MW

10.5; 11.2

Entrez
5539
Dilution Range

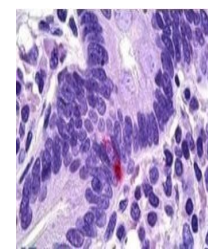
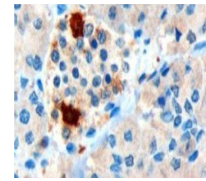
ELISA: 1:32000, IHC-P: 5 µg/ml

Expiration Date

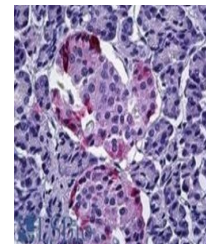
12 months from date of receipt.



Immunohistochemical staining of Human Pa...



Immunohistochemical staining of Human In...



Immunohistochemical staining of Human Pa...