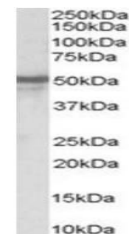


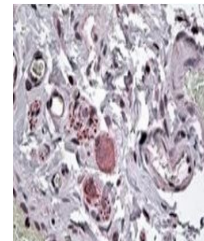
Product Datasheet

NPY5R antibody (orb19021)

Description	Goat Polyclonal antibody to NPY5R
Species/Host	Goat
Reactivity	Canine, Human, Mouse, Rat
Conjugation	Unconjugated
Tested Applications	ELISA, IHC, IP, WB
Target	Neuropeptide Y receptor Y5
Preservatives	Supplied at 0.5 mg/ml in Tris saline, 0.02% sodium azide, pH 7.3 with 0.5% bovine serum albumin. Aliquot and store at -20°C. Minimize freezing and thawing.
Storage	Aliquot and store at -20°C. Minimize freezing and thawing.
Note	For research use only
Application notes	ELISA: Peptide ELISA: antibody detection limit dilution 1:32000.WB: Approx 50kDa band observed in Human Brain, Breast and Duodenum lysates (calculated MW of 50.7kDa according to NP_006165.1). Recommended concentration: 0.3-1 µg/ml.Experiment Notes: Customer feedback showed specific results when this product was used in IP.
Protein Sequence	GLSNKENRLEEN
Clonality	Polyclonal
MW	50.7
Entrez	4889
Dilution Range	ELISA: 1:32000, WB: 0.3-1 µg/ml, IHC-P: 4-6µg/ml
Expiration Date	12 months from date of receipt.



Western blot analysis of Human Brain lys...



Immunohistochemical staining of Human In...