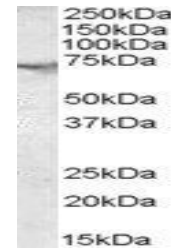


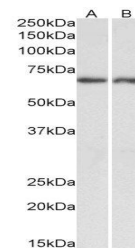
Product Datasheet

ACHE antibody (orb19007)

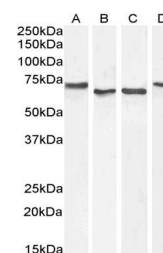
Description	Goat polyclonal antibody to ACHE
Species/Host	Goat
Reactivity	Human, Mouse, Rat
Conjugation	Unconjugated
Tested Applications	ELISA, FC, IF, WB
Target	ACHE
Preservatives	Supplied at 0.5 mg/ml in Tris saline, 0.02% sodium azide, pH 7.3 with 0.5% bovine serum albumin. Aliquot and store at -20°C. Minimize freezing and thawing.
Storage	Aliquot and store at -20°C. Minimize freezing and thawing.
Note	For research use only
Application notes	ELISA: Peptide ELISA: antibody detection limit dilution 1:2000.WB: Approx 70kDa band observed in Human Brain (Cerebellum) lysates (calculated MW of 67.8kDa according to NP_000656.1). Recommended concentration: 1-3 µg/ml.
Protein Sequence	QFDHYSKQDRCSDL
Clonality	Polyclonal
MW	67.8; 54.9
Entrez	43
Dilution Range	ELISA: 1:64000, WB: 0.3-1 µg/ml, IHC-P: 10ug/ml
Expiration Date	12 months from date of receipt.



orb19007 (1ug/ml) staining of Human Cere...



Western blot analysis of Human Brain (Ce...



Western blot analysis of HepG2 (A), Daud...