

---

## Product Datasheet

### SNAP25 antibody (orb19005)

**Description**

Goat polyclonal to SNAP25

**Species/Host**

Goat

**Reactivity**

Canine, Human, Mouse, Rat

**Conjugation**

Unconjugated

**Tested**

ELISA, WB

**Applications**
**Target**

SNAP25

**Preservatives**

Supplied at 0.5 mg/ml in Tris saline, 0.02% sodium azide, pH 7.3 with 0.5% bovine serum albumin. Aliquot and store at -20°C. Minimize freezing and thawing.

**Storage**

Aliquot and store at -20°C. Minimize freezing and thawing.

**Note**

For research use only

**Application notes**

ELISA: Peptide ELISA: antibody detection limit dilution 1:32000. IHC: In paraffin embedded Human Brain (Cerebral Cortex) shows axon/dendrite staining leaving cell bodies relatively unstained. Recommended concentration, 2-4ug/ml. WB: Approx 22kDa band observed in Human Brain and Mouse Brain lysates (calculated MW of 23.3kDa according to NP\_003072.2 and NP\_570824.1). Recommended concentration: 0.01-0.03 µg/ml.

**Protein Sequence**

DEANQRATKMLGSG

**Clonality**

Polyclonal

**MW**

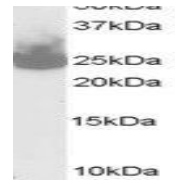
23.3

**Entrez**
**6616**
**Dilution Range**

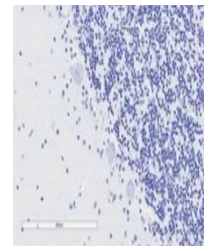
ELISA: 1:128000, WB: 0.03-0.1 µg/ml, IHC-P: 1-2 µg/ml

**Expiration Date**

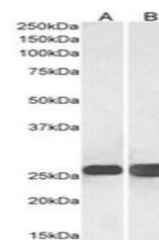
12 months from date of receipt.

Western blot analysis of Mouse Brain lys...



Immunohistochemical staining of Human Ce...



Western blot analysis of Human Brain (Ce...