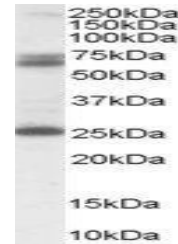


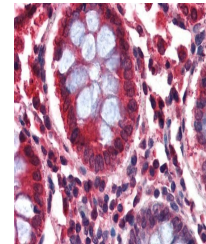
Product Datasheet

GAD65 antibody (orb18998)

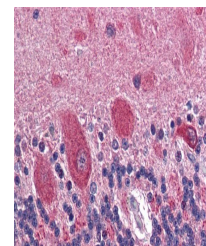
Description	Goat polyclonal antibody to GAD65
Species/Host	Goat
Reactivity	Canine, Human, Mouse, Rat
Conjugation	Unconjugated
Tested Applications	ELISA, IHC, WB
Target	GAD2 / GAD65
Preservatives	Supplied at 0.5 mg/ml in Tris saline, 0.02% sodium azide, pH 7.3 with 0.5% bovine serum albumin. Aliquot and store at -20°C. Minimize freezing and thawing.
Storage	Aliquot and store at -20°C. Minimize freezing and thawing.
Note	For research use only
Application notes	This antibody is expected to recognise both reported variants.ELISA: antibody detection limit dilution 1:16000.WB: Approx 65kDa band observed in Human Brain (Cerebral Cortex, Cerebellum and Hippocampus) lysates (calculated MW of 65.4kDa according to NP_000809.1). Recommended concentration: 0.3-1µg/ml.
Protein Sequence	TLEDNEERMSRLSK
Clonality	Polyclonal
MW	65.4; 65.4
Entrez	2572
Dilution Range	ELISA: 1:32000, WB: 0.5-1.5 µg/ml
Expiration Date	12 months from date of receipt.



Western blot analysis of Human Brain (Hippocampus) lysates



Immunohistochemical staining of Human Cerebellum



Immunohistochemical staining of Human Cerebellum