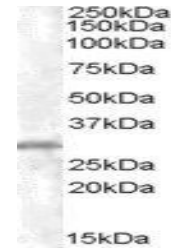


## Product Datasheet

### CHMP5 antibody (orb18993)

<b>Description</b>	Goat polyclonal antibody to CHMP5
<b>Species/Host</b>	Goat
<b>Reactivity</b>	Bovine, Human, Mouse, Rat
<b>Conjugation</b>	Unconjugated
<b>Tested Applications</b>	ELISA, WB
<b>Target</b>	CHMP5
<b>Preservatives</b>	Supplied at 0.5 mg/ml in Tris saline, 0.02% sodium azide, pH 7.3 with 0.5% bovine serum albumin. Aliquot and store at -20°C. Minimize freezing and thawing.
<b>Storage</b>	Aliquot and store at -20°C. Minimize freezing and thawing.
<b>Note</b>	For research use only
<b>Application notes</b>	ELISA: Peptide ELISA: antibody detection limit dilution 1:8000.WB: Approx 28kDa band observed in lysates of K562 (calculated MW of 24.5kDa according to NP_057494.2). The observed molecular weight corresponds to earlier findings in literature with different antibodies (Ward et al, J Biol Chem. 2005 Mar 18;280(11): 10548-55.; PMID: 15644320). Recommended concentration: 1-3 µg/ml.
<b>Protein Sequence</b>	NKDGVLVDEFGLPQ
<b>Clonality</b>	Polyclonal
<b>MW</b>	24.6
<b>Entrez</b>	<b>51510</b>
<b>Dilution Range</b>	ELISA: 1:8000, WB: 1-3 µg/ml
<b>Expiration Date</b>	12 months from date of receipt.



orb18993  
(xug/ml)  
staining of  
K562 lysat...