

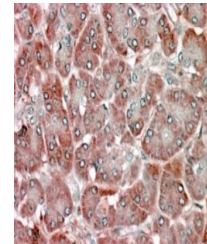
## Product Datasheet

### RBP1 antibody (orb18987)

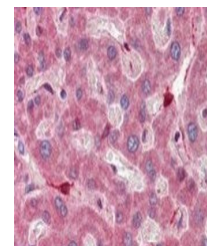
<b>Description</b>	Goat polyclonal antibody to RBP1
<b>Species/Host</b>	Goat
<b>Reactivity</b>	Bovine, Human, Mouse
<b>Conjugation</b>	Unconjugated
<b>Tested Applications</b>	ELISA, FC, IF, WB
<b>Target</b>	RBP1
<b>Preservatives</b>	Supplied at 0.5 mg/ml in Tris saline, 0.02% sodium azide, pH 7.3 with 0.5% bovine serum albumin. Aliquot and store at -20°C. Minimize freezing and thawing.
<b>Storage</b>	Aliquot and store at -20°C. Minimize freezing and thawing.
<b>Note</b>	For research use only
<b>Application notes</b>	ELISA: Peptide ELISA: antibody detection limit dilution 1:16000.IHC: In paraffin embedded Human Pancreas shows vesicular staining in the acinar cytoplasm but oriented towards the interlobular space.. Recommended concentration, 5-10ug/ml.WB: Approx 16kDa band observed in Murine NIH 3T3 lysates (calculated MW of 15.9kDa according to NP_002890.1). Recommended concentration: 0.1-0.3 µg/ml.
<b>Protein Sequence</b>	VEGVVCKQVFKKVQ
<b>Clonality</b>	Polyclonal
<b>MW</b>	22.3
<b>Entrez</b>	<b>5947</b>
<b>Dilution Range</b>	ELISA: 1:4000, WB: 0.5-3 µg/ml, IHC-P: 10ug/ml
<b>Expiration Date</b>	12 months from date of receipt.



Western blot analysis of NIH3T3 lysate u...



Immunohistochemical staining of Human Pa...



Immunohistochemical staining of Human Li...