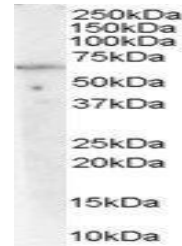


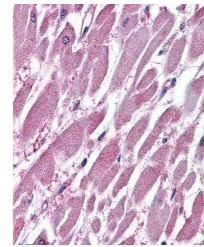
Product Datasheet

PPP2R1A antibody (orb18985)

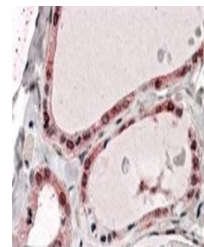
Description	Goat polyclonal antibody to PPP2R1A
Species/Host	Goat
Reactivity	Bovine, Canine, Human, Mouse, Porcine, Rat
Conjugation	Unconjugated
Tested Applications	ELISA, WB
Target	PP2A / PPP2R1A
Preservatives	Supplied at 0.5 mg/ml in Tris saline, 0.02% sodium azide, pH 7.3 with 0.5% bovine serum albumin. Aliquot and store at -20°C. Minimize freezing and thawing.
Storage	Aliquot and store at -20°C. Minimize freezing and thawing.
Note	For research use only
Application notes	ELISA: Peptide ELISA: antibody detection limit dilution 1:8000.WB: Approx 60kDa band observed in Human Thymus and Lymph Node lysates (calculated MW of 65.3kDa according to NP_055040.2). Recommended concentration: 0.03-0.1 µg/ml.
Protein Sequence	KYFAQEALTVLSLA
Clonality	Polyclonal
MW	65.3
Entrez	5518
Dilution Range	ELISA: 1:4000, WB: 2-6 µg/ml
Expiration Date	12 months from date of receipt.



Western blot analysis of Human Lymph Node...



Immunohistochemical staining of Human He...



Immunohistochemical staining of Human Th...