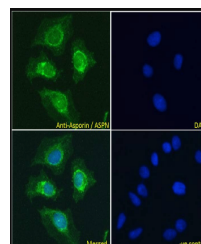


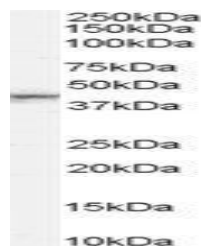
## Product Datasheet

### ASPEN antibody (orb18981)

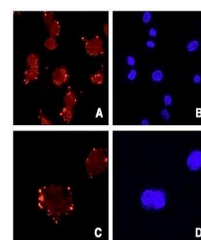
<b>Description</b>	Goat polyclonal antibody to ASPEN
<b>Species/Host</b>	Goat
<b>Reactivity</b>	Human, Mouse, Rat
<b>Conjugation</b>	Unconjugated
<b>Tested Applications</b>	ELISA, IF, WB
<b>Target</b>	Asporin / ASPN
<b>Preservatives</b>	Supplied at 0.5 mg/ml in Tris saline, 0.02% sodium azide, pH 7.3 with 0.5% bovine serum albumin. Aliquot and store at -20°C. Minimize freezing and thawing.
<b>Storage</b>	Aliquot and store at -20°C. Minimize freezing and thawing.
<b>Note</b>	For research use only
<b>Application notes</b>	ELISA: Peptide ELISA: antibody detection limit dilution 1:4000.WB: Approx 40kDa band observed in Human Bone Marrow lysates (calculated MW of 43.4kDa according to NP_060150.3). Recommended concentration: 1-3 µg/ml.Experiment Notes: Immunofluorescence: in cell line ATDC5 shows signals in cytoplasm and on the cell surface. Data gratefully received from Dr. Shiro Ikegawa, SNP Research Center, RIKEN, Japan.
<b>Protein Sequence</b>	IHENKVKKI QKDT
<b>Clonality</b>	Polyclonal
<b>MW</b>	43.3
<b>Entrez</b>	<b>54829</b>
<b>Dilution Range</b>	ELISA: 1:64000, WB: 0.1-1 µg/ml, IHC-P: 10 µg/ml
<b>Expiration Date</b>	12 months from date of receipt.



Immunofluorescence analysis of HeLa cell...



Western blot analysis of human bone marr...



Confocal immunofluorescence analysis of ...