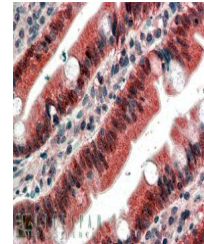


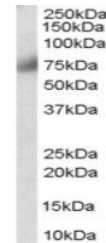
Product Datasheet

FGFR1 antibody (orb18979)

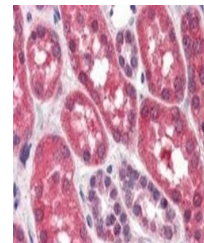
Description	Goat polyclonal antibody to FGFR1
Species/Host	Goat
Reactivity	Bovine, Canine, Human
Conjugation	Unconjugated
Tested Applications	ELISA, IHC, WB
Target	FGFR1
Preservatives	Supplied at 0.5 mg/ml in Tris saline, 0.02% sodium azide, pH 7.3 with 0.5% bovine serum albumin. Aliquot and store at -20°C. Minimize freezing and thawing.
Storage	Aliquot and store at -20°C. Minimize freezing and thawing.
Note	For research use only
Application notes	ELISA: Peptide ELISA: antibody detection limit dilution 1:32000.IHC: In paraffin embedded Human Small Intestine shows staining of the enterocytic cytoplasm. Recommended concentration, 4-6ug/ml.WB: Approx 75kDa band observed in human breast lysates (calculated MW of 82.2kDa according to NP_075593, 81.9kDa according to NP_075594). Recommended concentration: 0.3-1 µg/ml.
Protein Sequence	CLPRHPAQLANGGLKR
Clonality	Polyclonal
MW	91.9; 91.6; 82.2; 81.9; 87.4
Entrez	2260
Dilution Range	ELISA: 1:32000, WB: 0.3-1 µg/ml, IHC-P: 4 µg/ml
Expiration Date	12 months from date of receipt.



Immunohistochemical staining of paraffin...



Western blot analysis of Human Breast ly...



Immunohistochemical staining of Human Ki...