

---

## Product Datasheet

### PLXND1 antibody (orb18973)

**Description**

Goat polyclonal antibody to PLXND1

**Species/Host**

Goat

**Reactivity**

Bovine, Canine, Human, Porcine

**Conjugation**

Unconjugated

**Tested**

ELISA, FC, IF

**Applications**
**Target**

Plexin D1

**Preservatives**

Supplied at 0.5 mg/ml in Tris saline, 0.02% sodium azide, pH 7.3 with 0.5% bovine serum albumin. Aliquot and store at -20°C. Minimize freezing and thawing.

**Storage**

Aliquot and store at -20°C. Minimize freezing and thawing.

**Note**

For research use only

**Application notes**

ELISA: Peptide ELISA: antibody detection limit dilution 1:64000. WB: Preliminary experiments gave an approx 28kDa band in Human Bone Marrow lysates after 0.1 µg/ml antibody staining. Please note that currently we cannot find an explanation in the literature for the band we observe given the calculated size of 212kDa according to NP\_055918. The 28kDa band was successfully blocked by incubation with the immunizing peptide. We would appreciate any feedback from people in the field - have any results been reported with other antibodies/lysates Have any further splice variants/modified forms been reported

**Protein Sequence**

LAEPKKSQRQSH

**Clonality**

Polyclonal

**MW**

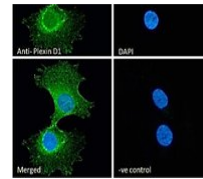
212

**Entrez**
[23129](#)
**Dilution Range**

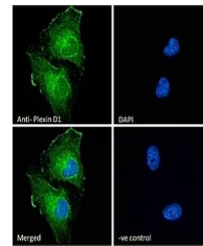
ELISA: 1:128000, IHC-P: 10ug/ml

**Expiration Date**

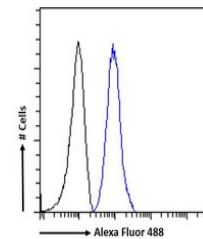
12 months from date of receipt.



Immunofluorescence analysis of HeLa cell...



Immunofluorescence analysis of U251 cell...



Flow cytometric analysis of K562 cells u...