

Product Datasheet

MYD88 antibody (orb18963)

Description

Goat polyclonal antibody to MYD88

Species/Host

Goat

Reactivity

Canine, Human, Mouse, Rat

Conjugation

Unconjugated

Tested Applications

ELISA, FC, IF, IHC, WB

Target

MYD88

Preservatives

Supplied at 0.5 mg/ml in Tris saline, 0.02% sodium azide, pH 7.3 with 0.5% bovine serum albumin. Aliquot and store at -20°C. Minimize freezing and thawing.

Concentration

0.1-0.3 µg/ml

Storage

Aliquot and store at -20°C. Minimize freezing and thawing.

Note

For research use only

Application notes

ELISA: Peptide ELISA: antibody detection limit dilution 1:16000. IHC: In paraffin embedded tonsil, stains clusters of cells some of which are likely to be plasma cells. In the interfollicular area occasional strongly stained areas. Epithelium is weakly positive. Recommended concentration, 2-5ug/ml. Data obtained from preWB: Approx 33kDa band observed in HumanThymus lysates (calculated MW of 33.2kDa according to NP_002459.1). Recommended concentration: 0.03-0.1 µg/ml.

Protein Sequence

IKYKAMKKEFP

Clonality

Polyclonal

MW

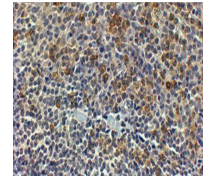
34.1; 33.2; 28.3; 16.4

Entrez
4615
Dilution Range

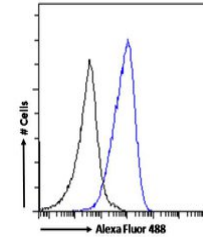
ELISA: 1:16000, WB: 0.1-0.3 µg/ml, IHC-P: 4-6 µg/ml, IF/ICC: 10µg/ml, FACS: 10ug/ml

Expiration Date

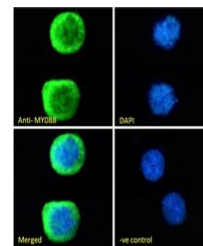
12 months from date of receipt.



Immunohistochemical analysis of staining...



Flow cytometric analysis of paraformalde...



Immunofluorescence analysis of paraforma...