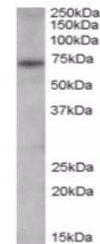


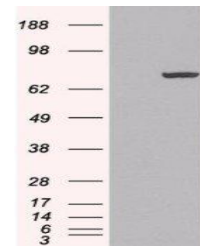
Product Datasheet

PADI4 antibody (orb18935)

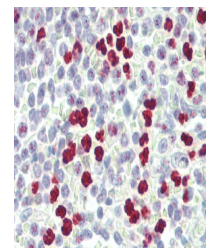
Description	Goat polyclonal antibody to PADI4
Species/Host	Goat
Reactivity	Human
Conjugation	Unconjugated
Tested Applications	ELISA, IF, IHC
Target	PAD4 / PADI4
Preservatives	Supplied at 0.5 mg/ml in Tris saline, 0.02% sodium azide, pH 7.3 with 0.5% bovine serum albumin. Aliquot and store at -20°C. Minimize freezing and thawing.
Storage	Aliquot and store at -20°C. Minimize freezing and thawing.
Note	For research use only
Application notes	ELISA: Peptide ELISA: antibody detection limit dilution 1:64000.WB: Approx 74kDa band observed in Human Spleen and Liver lysates (calculated MW of 74.1kDa according to NP_036519.2). In transfected HEK293 transiently expressing PADI4 a band of approx. 75kDa is observed. This band is not observed in the non-transfected HEK293. Recommended concentration: 0.3-1 µg/ml..
Protein Sequence	AQGTLIRVTPEQPC
Clonality	Polyclonal
MW	74.1
Entrez	23569
Dilution Range	ELISA: 1:64000, WB: 0.3-1 µg/ml, IHC-P: 5 µg/ml
Expiration Date	12 months from date of receipt.



HEK293 overexpressing PADI4 (RC206501) a...



Western blot analysis of Human Spleen Ly...



Immunohistochemical staining of Human Sp...