

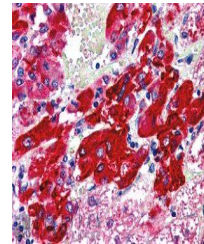
Product Datasheet

SLC18A2 antibody (orb18931)

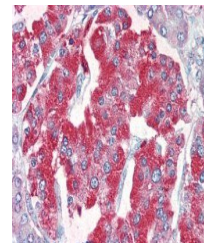
Description	Goat polyclonal antibody to SLC18A2
Species/Host	Goat
Reactivity	Bovine, Canine, Human, Mouse, Porcine, Rat
Conjugation	Unconjugated
Tested Applications	ELISA, IHC, WB
Target	VMAT2 / SLC18A2
Preservatives	Supplied at 0.5 mg/ml in Tris saline, 0.02% sodium azide, pH 7.3 with 0.5% bovine serum albumin. Aliquot and store at -20°C. Minimize freezing and thawing.
Storage	Aliquot and store at -20°C. Minimize freezing and thawing.
Note	For research use only
Application notes	ELISA: Peptide ELISA: antibody detection limit dilution 1:8000.IHC: In paraffin embedded Human Adrenal Gland shows cytoplasm staining of some epithelial cells in the medulla. Recommended concentration, 2-4ug/ml.WB: Approx 55kDa band observed in Human Placenta, Uterus, Adrenal Gland and Pancrease lysates (calculated MW of 55.7kDa according to NP_003045.2). Recommended concentration 1-3ug/ml
Protein Sequence	SYPIGEDEEESD
Clonality	Polyclonal
MW	55.7
Entrez	6571
Dilution Range	ELISA: 1:128000, WB: 1-3ug/ml
Expiration Date	12 months from date of receipt.



Western blot analysis of Human Placenta ...



Immunohistochemical staining of paraffin...



Immunohistochemical staining of Human Pa...