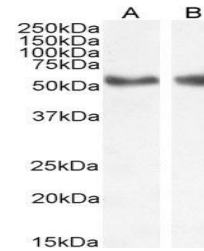


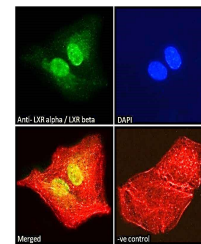
## Product Datasheet

### NR1H3; NR1H2 antibody (orb18917)

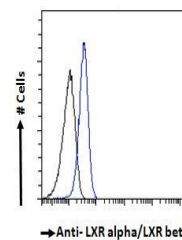
<b>Description</b>	Goat polyclonal antibody to NR1H3; NR1H2
<b>Species/Host</b>	Goat
<b>Reactivity</b>	Bovine, Canine, Human, Mouse, Rat
<b>Conjugation</b>	Unconjugated
<b>Tested Applications</b>	ELISA, FC, IF, WB
<b>Target</b>	LXR alpha / LXR beta
<b>Preservatives</b>	Supplied at 0.5 mg/ml in Tris saline, 0.02% sodium azide, pH 7.3 with 0.5% bovine serum albumin. Aliquot and store at -20°C. Minimize freezing and thawing.
<b>Storage</b>	Aliquot and store at -20°C. Minimize freezing and thawing.
<b>Note</b>	For research use only
<b>Application notes</b>	ELISA: Peptide ELISA: antibody detection limit dilution 1:32000.WB: Approx 55kDa band observed in human spleen lysates (calculated MW of 50.5kDa according to NP_005684 and 50.1kDa according to NP_009052). Recommended concentration: 1-3 µg/ml. Additional minor bands were also consistently observed at 38kDa and 75kDa. These bands were successfully blocked by incubation with the immunising peptide.
<b>Protein Sequence</b>	CRLQDKKLPPLLSEI
<b>Clonality</b>	Polyclonal
<b>MW</b>	50.5; 50.1; 43.6; 51.1; 38.9
<b>Entrez</b>	<b>10062, 7376</b>
<b>Dilution Range</b>	ELISA: 1:32000, WB: 1-3 µg/ml, IHC-P: 10ug/ml
<b>Expiration Date</b>	12 months from date of receipt.



Western blot analysis of Human Liver (la...



Immunofluorescence analysis of A549 cell...



Flow Cytometry analysis of A549 cells of...