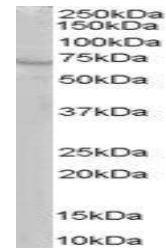


Product Datasheet

RIC8A antibody (orb18905)

Description	Goat polyclonal antibody to RIC8A
Species/Host	Goat
Reactivity	Bovine, Human, Mouse, Rat
Conjugation	Unconjugated
Tested Applications	ELISA, WB
Target	RIC8A / Synembryn
Preservatives	Supplied at 0.5 mg/ml in Tris saline, 0.02% sodium azide, pH 7.3 with 0.5% bovine serum albumin. Aliquot and store at -20°C. Minimize freezing and thawing.
Storage	Aliquot and store at -20°C. Minimize freezing and thawing.
Note	For research use only
Application notes	ELISA: Peptide ELISA: antibody detection limit dilution 1:32000.WB: Approx 70kDa band observed in human brain lysates (calculated MW of 60.4kDa according to NP_068751.4). Recommended concentration: 1-3 µg/ml.
Protein Sequence	CLSSDPDSDPD
Clonality	Polyclonal
MW	60.4
Entrez	60626
Dilution Range	ELISA: 1:32000, WB: 1-3 µg/ml
Expiration Date	12 months from date of receipt.



orb18905 staining (1µg/ml) of human brai...