

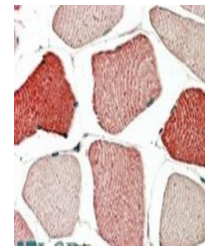
Product Datasheet

TOM1L2 antibody (orb18904)

Description	Goat polyclonal antibody to TOM1L2
Species/Host	Goat
Reactivity	Canine, Human, Mouse
Conjugation	Unconjugated
Tested Applications	ELISA, IHC, WB
Target	TOM1L2
Preservatives	Supplied at 0.5 mg/ml in Tris saline, 0.02% sodium azide, pH 7.3 with 0.5% bovine serum albumin. Aliquot and store at -20°C. Minimize freezing and thawing.
Storage	Aliquot and store at -20°C. Minimize freezing and thawing.
Note	For research use only
Application notes	ELISA: Peptide ELISA: antibody detection limit dilution 1:64000.WB: Approx 60kDa band observed in Human Fibroblast A431 lysates (calculated MW of 51.8kDa according to NP_653279). Recommended concentration: 0.1-1 µg/ml.
Protein Sequence	CRKKPERSEDALFAL
Clonality	Polyclonal
MW	50.0; 55.6
Entrez	146691
Dilution Range	ELISA: 1:64000, WB: 0.1-1 µg/ml, IHC-P: 5-10µg/ml
Expiration Date	12 months from date of receipt.



Western blot analysis of A431 lysate usi...



Immunohistochemical staining of Human Sk...