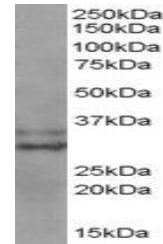


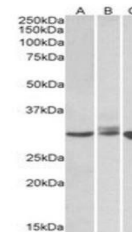
## Product Datasheet

### BIRC7 antibody (orb18901)

<b>Description</b>	Goat polyclonal antibody to BIRC7
<b>Species/Host</b>	Goat
<b>Reactivity</b>	Human
<b>Conjugation</b>	Unconjugated
<b>Tested Applications</b>	ELISA, WB
<b>Target</b>	LIVIN / BIRC7
<b>Preservatives</b>	Supplied at 0.5 mg/ml in Tris saline, 0.02% sodium azide, pH 7.3 with 0.5% bovine serum albumin. Aliquot and store at -20°C. Minimize freezing and thawing.
<b>Storage</b>	Aliquot and store at -20°C. Minimize freezing and thawing.
<b>Note</b>	For research use only
<b>Application notes</b>	ELISA: Peptide ELISA: antibody detection limit dilution 1:4000.WB: Experiments gave bands at approx 30kDa and 35kDa in human acute lymphoblastic leukaemia MOLT4 lysate after 0.3 µg/ml antibody staining. These bands correspond to the reported isoforms with calculated MW of 32.8kDa according to NP_647478.1and 30.9kDa according to NP_071444.1. Recommended concentration: 0.1 - 1.0 µg/ml.
<b>Protein Sequence</b>	RAPVRSRVRT
<b>Clonality</b>	Polyclonal
<b>MW</b>	32.8; 30.9
<b>Entrez</b>	<a href="#">79444</a>
<b>Dilution Range</b>	ELISA: 1:4000, WB: 0.3 - 1 µg/ml
<b>Expiration Date</b>	12 months from date of receipt.



Western blot analysis of MOLT4 lysate US...



Western blot analysis of Daudi (Lane 1),...