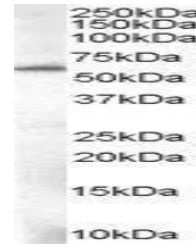


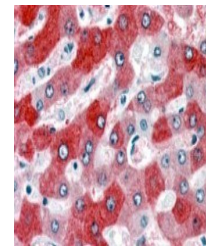
## Product Datasheet

### FTCD antibody (orb18891)

|                            |   |
|----------------------------|---|
| <b>Description</b>         | Goat polyclonal antibody to FTCD  |
| <b>Species/Host</b>        | Goat  |
| <b>Reactivity</b>          | Bovine, Human, Mouse, Porcine, Rat  |
| <b>Conjugation</b>         | Unconjugated  |
| <b>Tested Applications</b> | ELISA, FC, IF, WB   |
| <b>Target</b>              | 58KGolgi protein(Internal)/FTCD   |
| <b>Preservatives</b>       | Supplied at 0.5 mg/ml in Tris saline, 0.02% sodium azide, pH 7.3 with 0.5% bovine serum albumin. Aliquot and store at -20°C. Minimize freezing and thawing.   |
| <b>Storage</b>             | Aliquot and store at -20°C. Minimize freezing and thawing.  |
| <b>Note</b>                | For research use only   |
| <b>Application notes</b>   | ELISA: Peptide ELISA: antibody detection limit dilution 1:64000.WB: Approx 60kDa band observed in Human Liver lysates (calculated MW of 58.9kDa according to NP_006648.1and NP_996848.1). Recommended concentration: 0.01-0.03 µg/ml. |
| <b>Protein Sequence</b>    | CLREQGRGKDQPGRLL  |
| <b>Clonality</b>           | Polyclonal  |
| <b>MW</b>                  | 58.9; 58.9; 61.3  |
| <b>Entrez</b>              | <b>10841</b>  |
| <b>Dilution Range</b>      | ELISA: 1:64000, WB: 0.1-0.3 µg/ml, IHC-P: 10ug/ml   |
| <b>Expiration Date</b>     | 12 months from date of receipt.   |



Western blot analysis of Human Liver lys...



Immunohistochemical staining of Human Li...