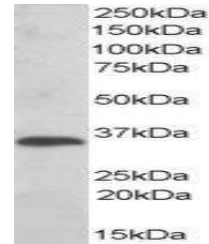


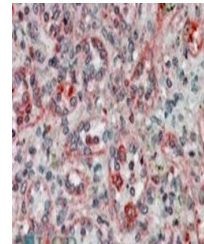
Product Datasheet

TXNDC1 antibody (orb18887)

Description	Goat polyclonal to TXNDC1
Species/Host	Goat
Reactivity	Human
Conjugation	Unconjugated
Tested Applications	ELISA, WB
Target	TXNDC1 / TMX
Preservatives	Supplied at 0.5 mg/ml in Tris saline, 0.02% sodium azide, pH 7.3 with 0.5% bovine serum albumin. Aliquot and store at -20°C. Minimize freezing and thawing.
Storage	Aliquot and store at -20°C. Minimize freezing and thawing.
Note	For research use only
Application notes	ELISA: Peptide ELISA: antibody detection limit dilution 1:64000.WB: Approx 35kDa band observed in human liver lysates (calculated MW of 31.8kDa according to NP_110382). Recommended concentration: 0.01-0.03 µg/ml.
Protein Sequence	RSLGPSLATDKS
Clonality	Polyclonal
MW	31.8
Entrez	81542
Dilution Range	ELISA: 1:64000, WB: 0.01-0.03 µg/ml
Expiration Date	12 months from date of receipt.



Western blot analysis of human liver lys...



Immunohistochemical staining of Human Sp...