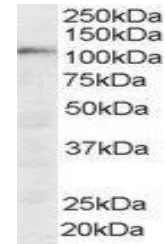


Product Datasheet

SART1 antibody (orb18886)

Description	Goat polyclonal antibody to SART1
Species/Host	Goat
Reactivity	Bovine, Human, Mouse, Rat
Conjugation	Unconjugated
Tested Applications	ELISA, WB
Target	SART1
Preservatives	Supplied at 0.5 mg/ml in Tris saline, 0.02% sodium azide, pH 7.3 with 0.5% bovine serum albumin. Aliquot and store at -20°C. Minimize freezing and thawing.
Storage	Aliquot and store at -20°C. Minimize freezing and thawing.
Note	For research use only
Application notes	ELISA: Peptide ELISA: antibody detection limit dilution 1:64000.WB: Approx 125kDa band observed in HeLa lysates (consistent with Vertegaal et al, below, calculated MW of 90.3 kDa according to NP_005137). Recommended concentration: 0.03-0.1 µg/ml.
Protein Sequence	GSSKKHRGEKEAA
Clonality	Polyclonal
MW	90.3
Entrez	9092
Dilution Range	ELISA: 1:64000, WB: 0.03-0.1 µg/ml
Expiration Date	12 months from date of receipt.



orb18886
(0.03ug/ml)
staining of
Hela ly...