

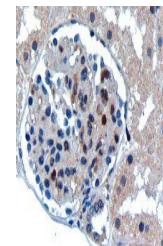
Product Datasheet

UBE2I antibody (orb18871)

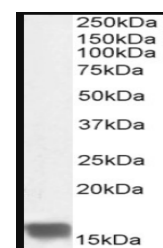
| | |
|----------------------------|---|
| Description | Goat polyclonal antibody to UBE2I |
| Species/Host | Goat |
| Reactivity | Canine, Human, Mouse, Rat |
| Conjugation | Unconjugated |
| Tested Applications | ELISA, IHC, WB |
| Target | UBE2I |
| Preservatives | Supplied at 0.5 mg/ml in Tris saline, 0.02% sodium azide, pH 7.3 with 0.5% bovine serum albumin. Aliquot and store at -20°C. Minimize freezing and thawing. |
| Storage | Aliquot and store at -20°C. Minimize freezing and thawing. |
| Note | For research use only |
| Application notes | ELISA: Peptide ELISA: antibody detection limit dilution 1:64000.IHC: In paraffin embedded Human Kidney, shows nuclear staining of some epithelial cells of glomeruli and renal tubules. Recommended concentration, 1ug/ml.WB: Approx 17kDa band observed in Human Kidney, Lung and Testis lysates and in Mouse and Rat Heart, Spleen and Testis lysates (calculated MW of 18.0kDa according to Human NP_003336.1). Recommended concentration: 0.1-0.3 µg/ml |
| Protein Sequence | SGIALSRLAQERK |
| Clonality | Polyclonal |
| MW | 18.0; 18.0; 18.0; 18.0 |
| Entrez | 7329 |
| Dilution Range | ELISA: 1:64000, WB: 0.1-0.3 µg/ml, IHC-P: 1 µg/ml |
| Expiration Date | 12 months from date of receipt. |



Western blot analysis of staining of Hum...



orb18871 (0.3ug/ml) staining of paraffin...



Western blot analysis of Rat Ovary lysat...