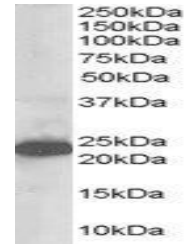


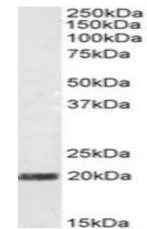
Product Datasheet

STMN2 antibody (orb18864)

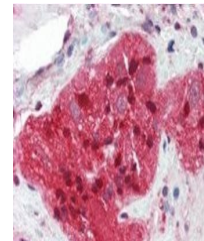
Description	Goat polyclonal antibody to STMN2
Species/Host	Goat
Reactivity	Bovine, Canine, Human, Mouse, Rat
Conjugation	Unconjugated
Tested Applications	ELISA, WB
Target	STMN2 / SCG10
Preservatives	Supplied at 0.5 mg/ml in Tris saline, 0.02% sodium azide, pH 7.3 with 0.5% bovine serum albumin. Aliquot and store at -20°C. Minimize freezing and thawing.
Storage	Aliquot and store at -20°C. Minimize freezing and thawing.
Note	For research use only
Application notes	ELISA: Peptide ELISA: antibody detection limit dilution 1:32000.WB: Approx 23kDa band observed in Human Brain and Human Epidermoid Carcinoma A431 cell lysates (calculated MW of 20.8kDa according to NP_008960.2). Recommended concentration: 0.1-1 µg/ml.
Protein Sequence	AKTAMAYKEK
Clonality	Polyclonal
MW	20.8
Entrez	11075
Dilution Range	ELISA: 1:128000, WB: 0.3-1 µg/ml
Expiration Date	12 months from date of receipt.



Western blot analysis of Human Brain lys...



Western blot analysis of Mouse Foetal Br...



Immunohistochemical staining of Human Sm...