

Product Datasheet

CYP7B1 antibody (orb18853)

Description

Goat polyclonal antibody to CYP7B1

Species/Host

Goat

Reactivity

Bovine, Human

Conjugation

Unconjugated

Tested

ELISA, IHC

Applications
Target

CYP7B1

Preservatives

Supplied at 0.5 mg/ml in Tris saline, 0.02% sodium azide, pH 7.3 with 0.5% bovine serum albumin. Aliquot and store at -20°C. Minimize freezing and thawing.

Storage

Aliquot and store at -20°C. Minimize freezing and thawing.

Note

For research use only

Application notes

ELISA: Peptide ELISA: antibody detection limit dilution 1:128000.IHC: In paraffin embedded Human Breast shows textured cytoplasm staining in ductal epithelial cells. Recommended concentration, 3-6ug/ml.WB: Preliminary experiments in Human Liver, Kidney and Prostate lysates gave no specific signal but low background (at antibody concentration up to 1 µg/ml). We would appreciate any feedback from people in the field - have any results been reported with other antibodies/lysates

Protein Sequence

YPDSVLFRLYKVKVKS

Clonality

Polyclonal

MW

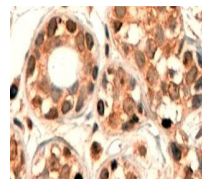
58.3

Entrez
9420
Dilution Range

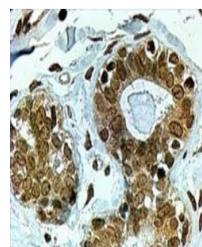
ELISA: 1:128000, WB: 1 µg/ml, IHC-P: 3-6µg/ml

Expiration Date

12 months from date of receipt.



Immunohistochemical staining of Human Br...



Immunohistochemical staining of Human Br...