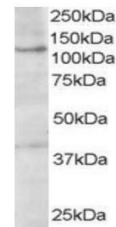


Product Datasheet

HPS3 antibody (orb18852)

Description	Goat polyclonal to HPS3
Species/Host	Goat
Reactivity	Bovine, Human, Mouse, Porcine, Rat
Conjugation	Unconjugated
Tested Applications	ELISA, WB
Target	HPS3 / Cocoa
Preservatives	Supplied at 0.5 mg/ml in Tris saline, 0.02% sodium azide, pH 7.3 with 0.5% bovine serum albumin. Aliquot and store at -20°C. Minimize freezing and thawing.
Storage	Aliquot and store at -20°C. Minimize freezing and thawing.
Note	For research use only
Application notes	ELISA: Peptide ELISA: antibody detection limit dilution 1:32000.WB: Approx 110kDa band observed in A431 cell lysate (calculated MW of 114kDa according to NP_115759). Recommended concentration: 1-3 µg/ml.
Protein Sequence	PYLLYCSRKKPLT
Clonality	Polyclonal
MW	114
Entrez	84343
Dilution Range	ELISA: 1:32000, WB: 1-3 µg/ml
Expiration Date	12 months from date of receipt.



Western blot analysis of A431 lysate using...