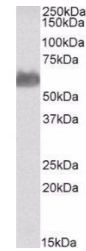


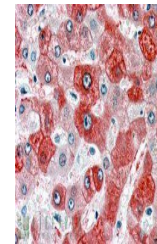
## Product Datasheet

### 58K Golgi protein antibody (orb18848)

<b>Description</b>	Goat polyclonal to 58K Golgi protein
<b>Species/Host</b>	Goat
<b>Reactivity</b>	Human, Mouse, Porcine
<b>Conjugation</b>	Unconjugated
<b>Tested Applications</b>	ELISA, FC, IF, WB
<b>Target</b>	58K Golgi protein(N-Term)/FTCD
<b>Preservatives</b>	Supplied at 0.5 mg/ml in Tris saline, 0.02% sodium azide, pH 7.3 with 0.5% bovine serum albumin. Aliquot and store at -20°C. Minimize freezing and thawing.
<b>Storage</b>	Aliquot and store at -20°C. Minimize freezing and thawing.
<b>Note</b>	For research use only
<b>Application notes</b>	Variants (NP_006648.1; NP_996848.1) encode the same protein.ELISA: Peptide ELISA: antibody detection limit dilution 1:64000.IHC: In paraffin embedded Human Liver shows distinct staining of membranes and cytoplasm in a selection of hepatocytes. Recommended concentration, 3-5ug/ml.WB: A 55-60kDa band observed in Human Liver lysate (calculated MW of 58.9kDa according to NP_006648. Recommended concentration: 0.03-0.5 µg/ml.
<b>Protein Sequence</b>	SQLVECVPNFSEGKNQ
<b>Clonality</b>	Polyclonal
<b>MW</b>	58.9; 61.3
<b>Entrez</b>	<b>10841</b>
<b>Dilution Range</b>	ELISA: 1:64000, WB: 0.05-0.2 µg/ml
<b>Expiration Date</b>	12 months from date of receipt.



orb18848  
(0.03ug/ml)  
staining of  
Human L...



orb18848  
(3.8ug/ml)  
staining of  
paraffin...