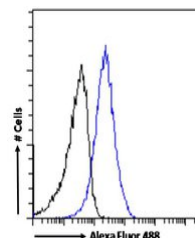


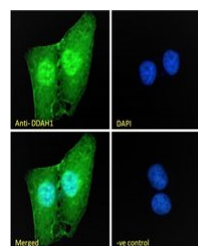
Product Datasheet

DDAH1 antibody (orb18846)

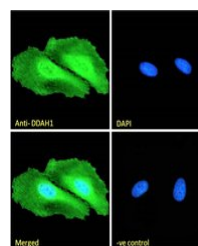
Description	Goat polyclonal antibody to DDAH1
Species/Host	Goat
Reactivity	Bovine, Human
Conjugation	Unconjugated
Tested Applications	ELISA, FC, IF, WB
Target	DDAH1
Preservatives	Supplied at 0.5 mg/ml in Tris saline, 0.02% sodium azide, pH 7.3 with 0.5% bovine serum albumin. Aliquot and store at -20°C. Minimize freezing and thawing.
Storage	Aliquot and store at -20°C. Minimize freezing and thawing.
Note	For research use only
Application notes	ELISA: Peptide ELISA: antibody detection limit dilution 1:16000.WB: Approx 37kDa band observed in human kidney, liver and pancreas lysates (calculated MW of 31.1kDa according to NP_036269.1). The observed molecular weight corresponds to earlier findings in literature with different antibodies (Pullamsetti et al, FASEB J. 2005 Jul;19(9):1175-7; PMID: 15827267). Recommended concentration: 0.1-0.3 µg/ml.
Protein Sequence	TCCSVLINKKVD
Clonality	Polyclonal
MW	31.1; 20.2; 20.5
Entrez	23576
Dilution Range	ELISA: 1:1000, WB: 0.1-0.3 µg/ml, IF/ICC: 10µg/ml, FACS: 10ug/ml
Expiration Date	12 months from date of receipt.



Flow cytometric analysis of paraformalde...



Immunofluorescence analysis of paraforma...



Immunofluorescence analysis of paraforma...