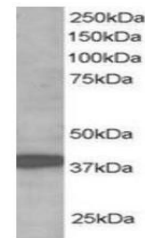


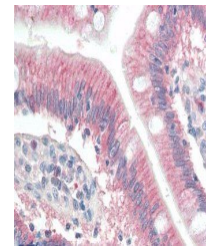
## Product Datasheet

### RNF39 antibody (orb18832)

<b>Description</b>	Goat polyclonal antibody to RNF39
<b>Species/Host</b>	Goat
<b>Reactivity</b>	Human, Porcine, Rat
<b>Conjugation</b>	Unconjugated
<b>Tested Applications</b>	ELISA, IHC, WB
<b>Target</b>	RNF39 / LIRF
<b>Preservatives</b>	Supplied at 0.5 mg/ml in Tris saline, 0.02% sodium azide, pH 7.3 with 0.5% bovine serum albumin. Aliquot and store at -20°C. Minimize freezing and thawing.
<b>Storage</b>	Aliquot and store at -20°C. Minimize freezing and thawing.
<b>Note</b>	For research use only
<b>Application notes</b>	ELISA: Peptide ELISA: antibody detection limit dilution 1:16000.WB: Approx 40kDa band observed in human brain lysates (predicted MWs of 41kDa and 48kDa according to NP_079512.1 and NP_739575.1). Recommended for use at 1-3 µg/ml.
<b>Protein Sequence</b>	CDPRAPLRIVPAES
<b>Clonality</b>	Polyclonal
<b>MW</b>	45.5; 38.2
<b>Entrez</b>	<b>80352</b>
<b>Dilution Range</b>	ELISA: 1:16000, WB: 1-3 µg/ml, IHC-P: 10 µg/ml
<b>Expiration Date</b>	12 months from date of receipt.



Western blot analysis of human brain lys...



Immunohistochemical staining of Human Sm...