
Product Datasheet

PIK3C2A antibody (orb18831)

Description

Goat polyclonal antibody to PIK3C2A


Species/Host

Goat

Reactivity

Canine, Human, Mouse

Conjugation

Unconjugated

Tested Applications

ELISA, IHC

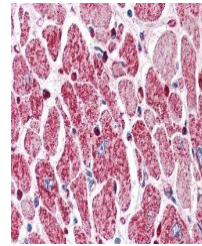
Target

PIK3C2A

Immunohistochemical staining of Human He...

Preservatives

Supplied at 0.5 mg/ml in Tris saline, 0.02% sodium azide, pH 7.3 with 0.5% bovine serum albumin. Aliquot and store at -20°C. Minimize freezing and thawing.


Storage

Aliquot and store at -20°C. Minimize freezing and thawing.

Note

For research use only

Application notes

ELISA: Peptide ELISA: antibody detection limit dilution 1:32000.IHC: In paraffin embedded Human Heart shows strong staining of the capillary network and patterned staining of the myocardial fibres in transverse section. Recommended concentration, 5-10ug/ml.WB: Preliminary experiments gave no signal but low background in Human Testis and Molt-4 lysates at up to 1 µg/ml. We would appreciate any feedback from people in the field - have any results been reported with other antibodies/lysates

Immunohistochemical staining of Human He...

Protein Sequence

TVKQYQLTAATYL

Clonality

Polyclonal

MW

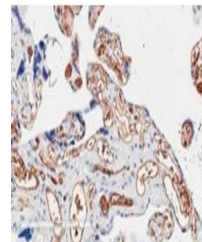
191

Entrez
[5286](#)
Dilution Range

ELISA: 1:32000, WB: 1 µg/ml, IHC-P: 5 µg/ml

Expiration Date

12 months from date of receipt.



Immunohistochemical staining of Human Pl...