
Product Datasheet

NDRG1 antibody (orb18830)

Description

Goat polyclonal antibody to NDRG1

Species/Host

Goat

Reactivity

Human

Conjugation

Unconjugated

Tested Applications

ELISA, IHC, WB

Target

NDRG1

Preservatives

Supplied at 0.5 mg/ml in Tris saline, 0.02% sodium azide, pH 7.3 with 0.5% bovine serum albumin. Aliquot and store at -20°C. Minimize freezing and thawing.

Concentration

0.5-2 µg/ml

Storage

Aliquot and store at -20°C. Minimize freezing and thawing.

Note

For research use only

Application notes

ELISA: Peptide ELISA: antibody detection limit dilution 1:32000.WB: Approx 48kDa band observed in lysates of Human Brain, Kidney and Testes (calculated MW of 42.8kDa according to NP_006087.2). Recommended concentration: 0.1-0.3 µg/ml. A minor band of unknown identity was also consistently observed at 20kDa. This band was successfully blocked by incubation with the immunising peptide. We would appreciate any feedback from people in the field - have any results been reported with other antibodies/lysates Have any further splice variants/modified forms been reported

Protein Sequence

GNSAGPKSMEVSC

Clonality

Polyclonal

MW

42.8

Entrez
10397
Dilution Range

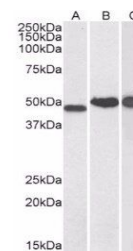
ELISA: 1:32000, WB: 0.1-0.3 µg/ml, IHC-P: 2.5 µg/ml

Expiration Date

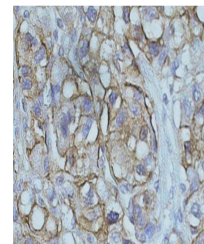
12 months from date of receipt.




orb18830 staining
(0.1µg/ml) of Human
Ki...



Western blot analysis
of Human Kidney (L...



Immunohistochemical
staining of Human
he...