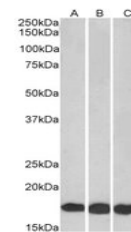


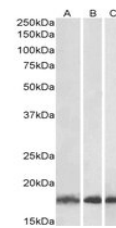
Product Datasheet

UBE2L3 antibody (orb18828)

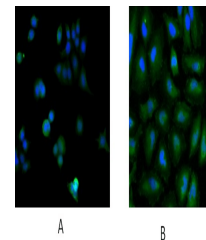
Description	Goat polyclonal antibody to UBE2L3
Species/Host	Goat
Reactivity	Bovine, Human, Mouse, Porcine, Rat
Conjugation	Unconjugated
Tested Applications	ELISA, IF, WB
Target	UBE2L3
Preservatives	Supplied at 0.5 mg/ml in Tris saline, 0.02% sodium azide, pH 7.3 with 0.5% bovine serum albumin. Aliquot and store at -20°C. Minimize freezing and thawing.
Storage	Aliquot and store at -20°C. Minimize freezing and thawing.
Note	For research use only
Application notes	ELISA: Peptide ELISA: antibody detection limit dilution 1:128000. WB: Approx 18kDa band observed in Hela and Jurkat lysates (predicted MW of 18kDa according to NP_003338). Recommended for use at 0.5-2 µg/ml.
Protein Sequence	EFTKKYGEKRPVD
Clonality	Polyclonal
MW	17.9
Entrez	7332
Dilution Range	ELISA: 1:128000, WB: 1-3 µg/ml, IHC-P: 5 µg/ml
Expiration Date	12 months from date of receipt.



EB05770
(0.01µg/ml) staining
of HEK293 ...



EB05770
(0.03µg/ml) staining
of Human (...)



Immunofluorescence
staining of MCF7 (A)

...