

---

## Product Datasheet

### MSX1 antibody (orb18823)

**Description**

Goat polyclonal antibody to MSX1

**Species/Host**

Goat

**Reactivity**

Bovine, Human, Mouse, Porcine, Rat

**Conjugation**

Unconjugated

**Tested**

ELISA, IHC, WB

**Applications**
**Target**

MSX1

**Preservatives**

Supplied at 0.5 mg/ml in Tris saline, 0.02% sodium azide, pH 7.3 with 0.5% bovine serum albumin. Aliquot and store at -20°C. Minimize freezing and thawing.

**Storage**

Aliquot and store at -20°C. Minimize freezing and thawing.

**Note**

For research use only

**Application notes**

ELISA: Peptide ELISA: antibody detection limit dilution 1:16000. IHC: In paraffin embedded Human Prostate shows staining of nucleoli in a few epithelial cells. Recommended concentration, 2-4ug/ml. WB: Preliminary experiments gave an approx. 55-60kDa band in Human Muscle and Heart lysates at 1 µg/ml. Further, this band was successfully blocked by incubation with the immunising peptide. Please note that currently we cannot find an explanation in the literature for the band we observe given the predicted size of approx. 31.4kDa according to Human NP\_002439.2. We would appreciate any feedback from people in the field - have any results been reported with other antibodies/lysates Have any further splice variants/modified forms been reported

**Protein Sequence**

TSLPLGVKVEDS

**Clonality**

Polyclonal

**MW**

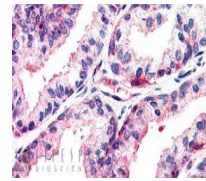
31.5

**Entrez**
[4487](#)
**Dilution Range**

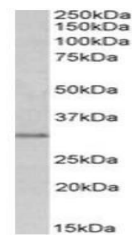
ELISA: 1:64000, WB: 1ug/ml, IHC-P: 2-4µg/ml

**Expiration Date**

12 months from date of receipt.



Immunohistochemical staining of Human Prostate ...



Western blot analysis of Human Prostate ...