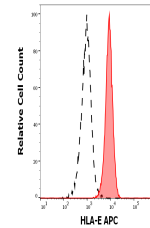


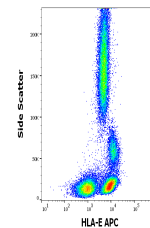
Product Datasheet

HLA-E Antibody (APC) (orb1881244)

Description	HLA-E (human leukocyte antigen E) is a non-classical MHC I antigen, which is important for dialogue ...
Reactivity	Human
Conjugation	APC
Tested Applications	FC
Immunogen	recombinant human HLA-E
Target	HLA-E
Preservatives	Stabilizing phosphate buffered saline (PBS), pH 7.4, 15 mM sodium azide
Concentration	0.1 mg/ml
Storage	Store at 2-8°C. Protect from prolonged exposure to light. Do not freeze.
Note	For research use only
Application notes	Flow cytometry: Recommended dilution: 1-4 µg/ml.
Isotype	Mouse IgG1
Clonality	Monoclonal
Uniprot ID	P13747
Entrez	3133
Expiration Date	12 months from date of receipt.



Separation of human lymphocytes (red-fil...



Flow cytometry surface staining pattern ...