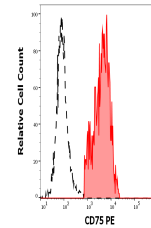


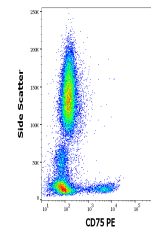
## Product Datasheet

### CD75 Antibody (PE) (orb1881241)

<b>Description</b>	CD75 is a lactosamine structure, which is present mainly on the surface of germinal center B cells. ...
<b>Reactivity</b>	Human
<b>Conjugation</b>	PE
<b>Tested Applications</b>	FC
<b>Immunogen</b>	Stimulated human PBL
<b>Target</b>	CD75
<b>Preservatives</b>	Stabilizing Tris buffered saline (TBS), pH 8.0, 15 mM sodium azide
<b>Storage</b>	Store at 2-8°C. Protect from prolonged exposure to light. Do not freeze.
<b>Note</b>	For research use only
<b>Application notes</b>	Flow cytometry: The reagent is designed for analysis of human blood cells using 10 µl reagent / 100 µl of whole blood or 106 cells in a suspension. The content of a vial (1 ml) is sufficient for 100 tests.
<b>Isotype</b>	Mouse IgM kappa
<b>Clonality</b>	Monoclonal
<b>Expiration Date</b>	12 months from date of receipt.



Separation of human CD75 positive lympho...



Flow cytometry surface staining pattern ...