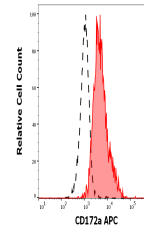


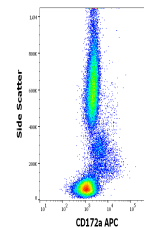
## Product Datasheet

### CD172a Antibody (APC) (orb1881229)

<b>Description</b>	CD172a, the signal-regulatory protein alpha (SIRP alpha), also known as SH2 domain-containing phosph...
<b>Reactivity</b>	Human
<b>Conjugation</b>	APC
<b>Tested Applications</b>	FC
<b>Immunogen</b>	Kg-1a cell line
<b>Target</b>	CD172a
<b>Preservatives</b>	Stabilizing phosphate buffered saline (PBS), pH 7.4, 15 mM sodium azide
<b>Storage</b>	Store at 2-8°C. Protect from prolonged exposure to light. Do not freeze.
<b>Note</b>	For research use only
<b>Application notes</b>	Flow cytometry: The reagent is designed for analysis of human blood cells using 10 µl reagent / 100 µl of whole blood or 106 cells in a suspension. The content of a vial (1 ml) is sufficient for 100 tests.
<b>Isotype</b>	Mouse IgG2a
<b>Clonality</b>	Monoclonal
<b>Uniprot ID</b>	<a href="#">P78324</a>
<b>Entrez</b>	<a href="#">140885</a>
<b>Expiration Date</b>	12 months from date of receipt.



Separation of human monocytes (red-fille...



Flow cytometry surface staining pattern ...