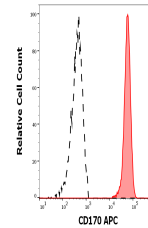


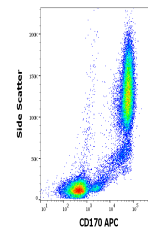
## Product Datasheet

### CD170 Antibody (APC) (orb1881228)

|                            |                                                                                                                                                                                                               |
|----------------------------|---------------------------------------------------------------------------------------------------------------------------------------------------------------------------------------------------------------|
| <b>Description</b>         | CD170, also known as Siglec 5 (sialic acid binding Ig-like lectin 5) is a type 1 transmembrane glyco...                                                                                                       |
| <b>Reactivity</b>          | Human, Primate                                                                                                                                                                                                |
| <b>Conjugation</b>         | APC                                                                                                                                                                                                           |
| <b>Tested Applications</b> | FC                                                                                                                                                                                                            |
| <b>Immunogen</b>           | Fusion protein composed of human CD170 extracellular domain and Fc region of human IgG1                                                                                                                       |
| <b>Target</b>              | CD170                                                                                                                                                                                                         |
| <b>Preservatives</b>       | Stabilizing phosphate buffered saline (PBS), pH 7.4, 15 mM sodium azide                                                                                                                                       |
| <b>Storage</b>             | Store at 2-8°C. Protect from prolonged exposure to light. Do not freeze.                                                                                                                                      |
| <b>Note</b>                | For research use only                                                                                                                                                                                         |
| <b>Application notes</b>   | Flow cytometry: The reagent is designed for analysis of human blood cells using 10 µl reagent / 100 µl of whole blood or 106 cells in a suspension. The content of a vial (1 ml) is sufficient for 100 tests. |
| <b>Isotype</b>             | Mouse IgG1                                                                                                                                                                                                    |
| <b>Clonality</b>           | Monoclonal                                                                                                                                                                                                    |
| <b>Uniprot ID</b>          | <a href="#">O15389</a>                                                                                                                                                                                        |
| <b>Entrez</b>              | <a href="#">8778</a>                                                                                                                                                                                          |
| <b>Expiration Date</b>     | 12 months from date of receipt.                                                                                                                                                                               |



Separation of human neutrophil granulocy...



Flow cytometry surface staining pattern ...