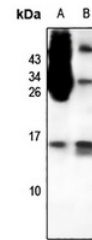


Product Datasheet

Anti-CCL1 Antibody (BSA and Azide free) (orb1881026)

Description	Rabbit polyclonal antibody to CCL1
Reactivity	Human, Rat
Conjugation	Unconjugated
Tested Applications	WB
Immunogen	KLH-conjugated synthetic peptide encompassing a sequence within the center region of human CCL1. The exact sequence is proprietary.
Form/Appearance	Liquid in PBS, pH 7.3.
Storage	Shipped at 4°C. Upon delivery aliquot and store at -20°C for one year. Avoid freeze/thaw cycles.
Note	For research use only
Clonality	Polyclonal
Source	Rabbit
Uniprot ID	P22362
Entrez	6346
Dilution Range	WB (1/500 - 1/1000)
Expiration Date	12 months from date of receipt.



Western blot analysis of CCL1 expression...