

## Product Datasheet

### Anti-MLKL (Phospho-S345) Antibody (orb1881023)

|                            |  |
|----------------------------|--|
| <b>Description</b>         | Rabbit polyclonal antibody to MLKL (Phospho-S345)  |
| <b>Reactivity</b>          | Mouse, Rat   |
| <b>Conjugation</b>         | Unconjugated   |
| <b>Tested Applications</b> | WB   |
| <b>Immunogen</b>           | KLH-conjugated synthetic phosphopeptide corresponding to residues surrounding S345 of human MLKL protein. The exact sequence is proprietary. |
| <b>Form/Appearance</b>     | Liquid in 0.42% Potassium phosphate, 0.87% Sodium chloride, pH 7.3, 30% glycerol, and 0.01% sodium azide.                                    |
| <b>Storage</b>             | Maintain refrigerated at 2-8°C for up to 2 weeks. For long term storage store at -20°C in small aliquots to prevent freeze-thaw cycles.      |
| <b>Note</b>                | For research use only  |
| <b>Clonality</b>           | Polyclonal   |
| <b>Source</b>              | Rabbit   |
| <b>Uniprot ID</b>          | <b>Q9D2Y4</b>  |
| <b>Entrez</b>              | <b>74568</b>   |
| <b>Dilution Range</b>      | WB (1/500 - 1/1000)  |
| <b>Expiration Date</b>     | 12 months from date of receipt.  |

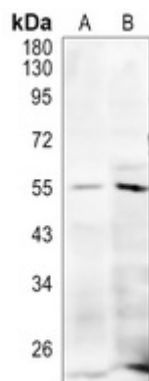
---

**Biorbyt Ltd.**

7 Signet Court, Swann's Road,  
Cambridge, CB5 8LA, United Kingdom  
Email: [info@biorbyt.com](mailto:info@biorbyt.com), [support@biorbyt.com](mailto:support@biorbyt.com)  
Phone: [+44 \(0\) 1223 859-353](tel:+44(0)1223859353) | Fax: [+1 \(415\) 651-8558](tel:+1(415)6518558)

**Biorbyt LLC.**

68 TW Alexander Drive,  
Durham, NC, 27713, United States  
Email: [info@biorbyt.com](mailto:info@biorbyt.com), [support@biorbyt.com](mailto:support@biorbyt.com)  
Phone: [+1 \(415\) 906-5211](tel:+1(415)9065211) | Fax: [+1 \(415\) 651-8558](tel:+1(415)6518558)



Western blot analysis of MLKL (Phospho-S345) expression in mouse kidney (A), rat kidney (B) whole cell lysates. (Predicted band size: 54 kD; Observed band size: 54 kD)

**Biorbyt Ltd.**

7 Signet Court, Swann's Road,  
Cambridge, CB5 8LA, United Kingdom  
Email: [info@biorbyt.com](mailto:info@biorbyt.com), [support@biorbyt.com](mailto:support@biorbyt.com)  
Phone: [+44 \(0\) 1223 859-353](tel:+44(0)1223859353) | Fax: [+1 \(415\) 651-8558](tel:+1(415)6518558)

**Biorbyt LLC.**

68 TW Alexander Drive,  
Durham, NC, 27713, United States  
Email: [info@biorbyt.com](mailto:info@biorbyt.com), [support@biorbyt.com](mailto:support@biorbyt.com)  
Phone: [+1 \(415\) 906-5211](tel:+1(415)9065211) | Fax: [+1 \(415\) 651-8558](tel:+1(415)6518558)