

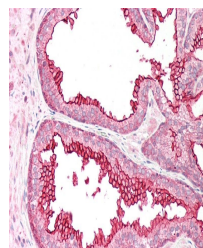
Product Datasheet

RGS18 antibody (orb18808)

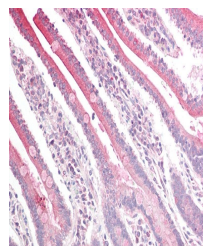
Description	Goat polyclonal antibody to RGS18
Species/Host	Goat
Reactivity	Human
Conjugation	Unconjugated
Tested Applications	ELISA, IHC, WB
Target	RGS18
Preservatives	Supplied at 0.5 mg/ml in Tris saline, 0.02% sodium azide, pH 7.3 with 0.5% bovine serum albumin. Aliquot and store at -20°C. Minimize freezing and thawing.
Storage	Aliquot and store at -20°C. Minimize freezing and thawing.
Note	For research use only
Application notes	ELISA: Peptide ELISA: antibody detection limit dilution 1:16000.WB: Approx 28kDa band observed in Human Peripheral Blood Mononucleocytes (lymphocytes) lysates (calculated MW of 27.6kDa according to NP_570138.1). Recommended concentration: 1-3 µg/ml.
Protein Sequence	CNEFQDVQSDVAIWL
Clonality	Polyclonal
MW	27.6
Entrez	64407
Dilution Range	ELISA: 1:16000, WB: 1-3 µg/ml, IHC-P: 5 µg/ml
Expiration Date	12 months from date of receipt.



orb18808 (1ug/ml)
staining of Human
Peri...



Immunohistochemical
staining of Human
Pr...



Immunohistochemical
staining of Human
Sm...