

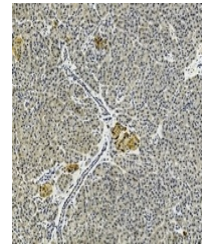
Product Datasheet

Anti-IL-17B Antibody (orb1880721)

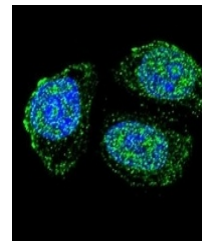
| | |
|----------------------------|--|
| Description | Rabbit polyclonal antibody to IL-17B |
| Reactivity | Human, Mouse |
| Conjugation | Unconjugated |
| Tested Applications | IF, IH, WB |
| Immunogen | KLH-conjugated synthetic peptide encompassing a sequence within the Central region of human IL-17B. The exact sequence is proprietary. |
| Form/Appearance | Liquid in 0.42% Potassium phosphate, 0.87% Sodium chloride, pH 7.3, 30% glycerol, and 0.01% sodium azide. |
| Storage | Shipped at 4°C. Upon delivery aliquot and store at -20°C for one year. Avoid freeze/thaw cycles. |
| Note | For research use only |
| Clonality | Polyclonal |
| Source | Rabbit |
| Uniprot ID | Q9UHF5, Q9QXT6 |
| Entrez | 56069, 27190 |
| Dilution Range | WB (1/500 - 1/1000), IH (1/50 - 1/100), IF/IC (1/10 - 1/50) |
| Expiration Date | 12 months from date of receipt. |



Western blot analysis of IL-17B expressi...



Immunohistochemical analysis of IL-17B s...



Immunofluorescent analysis of Anti-IL-17...