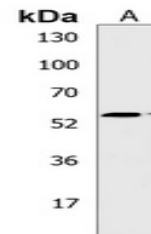


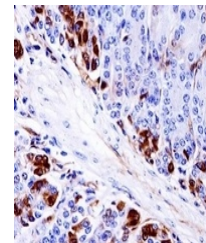
Product Datasheet

Anti-PRAK Antibody (orb1880399)

| | |
|----------------------------|---|
| Description | Rabbit polyclonal antibody to PRAK |
| Reactivity | Human, Mouse |
| Conjugation | Unconjugated |
| Tested Applications | IH, WB |
| Immunogen | KLH-conjugated synthetic peptide encompassing a sequence within the N-terminal region of human PRAK. The exact sequence is proprietary. |
| Form/Appearance | Liquid in 0.42% Potassium phosphate, 0.87% Sodium chloride, pH 7.3, 30% glycerol, and 0.01% sodium azide. |
| Storage | Shipped at 4°C. Upon delivery aliquot and store at -20°C for one year. Avoid freeze/thaw cycles. |
| Note | For research use only |
| Clonality | Polyclonal |
| Source | Rabbit |
| Uniprot ID | Q81W41 , O54992 |
| Entrez | 8550 , 17165 |
| Dilution Range | WB (1/500 - 1/1000), IH (1/50 - 1/200) |
| Expiration Date | 12 months from date of receipt. |



Western blot analysis of PRAK expression...



Immunohistochemical analysis of PRAK sta...