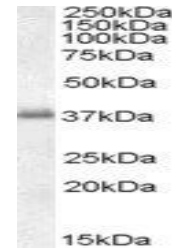


Product Datasheet

LAT antibody (orb18803)

Description	Goat polyclonal antibody to LAT
Species/Host	Goat
Reactivity	Human, Mouse, Rat
Conjugation	Unconjugated
Tested Applications	ELISA, WB
Target	LAT1
Preservatives	Supplied at 0.5 mg/ml in Tris saline, 0.02% sodium azide, pH 7.3 with 0.5% bovine serum albumin. Aliquot and store at -20°C. Minimize freezing and thawing.
Storage	Aliquot and store at -20°C. Minimize freezing and thawing.
Note	For research use only
Application notes	ELISA: Peptide ELISA: antibody detection limit dilution 1:2000.WB: Approx 35kDa band observed in Human PBMC lysates (predicted MW of 30kDa according to NP_055202.1). Recommended for use at 1-3 µg/ml.
Protein Sequence	GAPDYENLQELN
Clonality	Polyclonal
MW	27.9; 25.0; 24.8
Entrez	27040
Dilution Range	ELISA: 1:2000, WB: 0.01-0.03 µg/ml
Expiration Date	12 months from date of receipt.



orb18803
(0.01ug/ml)
staining of periphe...