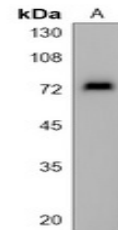


Product Datasheet

Anti-ASNSD1 Antibody (orb1879921)

Description	Rabbit polyclonal antibody to ASNSD1
Reactivity	Human
Conjugation	Unconjugated
Tested Applications	WB
Immunogen	KLH-conjugated synthetic peptide encompassing a sequence within the Central region of human ASNSD1. The exact sequence is proprietary.
Form/Appearance	Liquid in 0.42% Potassium phosphate, 0.87% Sodium chloride, pH 7.3, 30% glycerol, and 0.01% sodium azide.
Storage	Maintain refrigerated at 2-8°C for up to 2 weeks. For long term storage store at -20°C in small aliquots to prevent freeze-thaw cycles.
Note	For research use only
Clonality	Polyclonal
Source	Rabbit
Uniprot ID	Q9NWL6
Entrez	54529
Dilution Range	WB (1/500 - 1/1000)
Expiration Date	12 months from date of receipt.



Western blot analysis of ASNSD1 expressi...