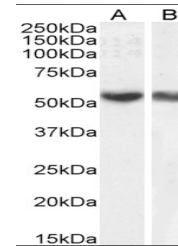


Product Datasheet

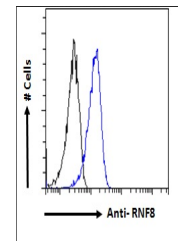
RNF8 antibody (orb18798)

Description	Goat polyclonal antibody to RNF8
Species/Host	Goat
Reactivity	Human
Conjugation	Unconjugated
Tested Applications	ELISA, FC, WB
Target	RNF8
Preservatives	Supplied at 0.5 mg/ml in Tris saline, 0.02% sodium azide, pH 7.3 with 0.5% bovine serum albumin. Aliquot and store at -20°C. Minimize freezing and thawing.
Storage	Aliquot and store at -20°C. Minimize freezing and thawing.
Note	For research use only
Application notes	ELISA: Peptide ELISA: antibody detection limit dilution 1:64000.WB: Approx 55kDa band observed in Human Placenta and Lung lysates (predicted MW of 56kDa according to NP_003949). Recommended for use at 0.1-1 µg/ml.
Protein Sequence	GEPGFFVTGDRAG
Clonality	Polyclonal
MW	55.5; 50.8
Entrez	9025
Dilution Range	ELISA: 1:128000, WB: 0.5-2 µg/ml, IHC-P: 10ug/ml
Expiration Date	12 months from date of receipt.



Western blot analysis of HepG2 (lane 1)

...



Flow cytometric analysis of paraformaldehyde...