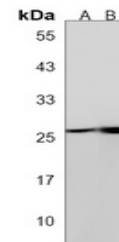


Product Datasheet

Anti-CYB5R2 Antibody (orb1879729)

Description	Rabbit polyclonal antibody to CYB5R2
Reactivity	Human, Mouse
Conjugation	Unconjugated
Tested Applications	WB
Immunogen	KLH-conjugated synthetic peptide encompassing a sequence within the N-terminal region of human CYB5R2. The exact sequence is proprietary.
Form/Appearance	Liquid in 0.42% Potassium phosphate, 0.87% Sodium chloride, pH 7.3, 30% glycerol, and 0.01% sodium azide.
Storage	Shipped at 4°C. Upon delivery aliquot and store at -20°C for one year. Avoid freeze/thaw cycles.
Note	For research use only
Clonality	Polyclonal
Source	Rabbit
Uniprot ID	Q6BCY4 , Q3KNK3
Entrez	320635 , 51700
Dilution Range	WB (1/500 - 1/1000)
Expiration Date	12 months from date of receipt.



Western blot analysis of CYB5R2 expressi...