

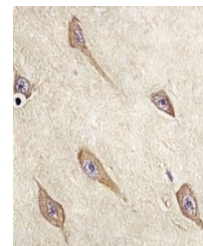
Product Datasheet

Anti-FAM168B Antibody (orb1879677)

| | |
|----------------------------|---|
| Description | Rabbit polyclonal antibody to FAM168B |
| Reactivity | Human |
| Conjugation | Unconjugated |
| Tested Applications | FC, IH, WB |
| Immunogen | KLH-conjugated synthetic peptide encompassing a sequence within the Central region of human FAM168B. The exact sequence is proprietary. |
| Form/Appearance | Liquid in 0.42% Potassium phosphate, 0.87% Sodium chloride, pH 7.3, 30% glycerol, and 0.01% sodium azide. |
| Storage | Shipped at 4°C. Upon delivery aliquot and store at -20°C for one year. Avoid freeze/thaw cycles. |
| Note | For research use only |
| Clonality | Polyclonal |
| Source | Rabbit |
| Uniprot ID | A1KXE4 |
| Entrez | 130074 |
| Dilution Range | WB (1/500 - 1/1000), IH (1/50 - 1/200), FC (1/10 - 1/30) |
| Expiration Date | 12 months from date of receipt. |

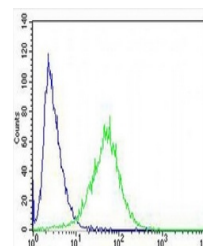


Western blot analysis of FAM168B express...



Immunohistochemical analysis of FAM168B

...



Flow cytometric analysis of SHSY5Y cells...