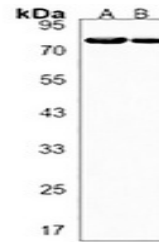


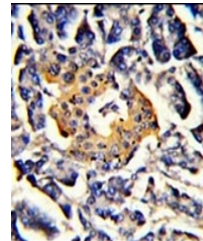
Product Datasheet

Anti-SRP72 Antibody (orb1879555)

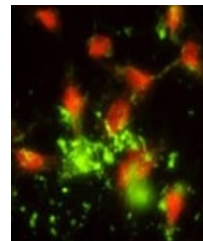
Description	Rabbit polyclonal antibody to SRP72
Reactivity	Human
Conjugation	Unconjugated
Tested Applications	FC, IF, IH, WB
Immunogen	KLH-conjugated synthetic peptide encompassing a sequence within the Central region of human SRP72. The exact sequence is proprietary.
Form/Appearance	Liquid in 0.42% Potassium phosphate, 0.87% Sodium chloride, pH 7.3, 30% glycerol, and 0.01% sodium azide.
Storage	Shipped at 4°C. Upon delivery aliquot and store at -20°C for one year. Avoid freeze/thaw cycles.
Note	For research use only
Clonality	Polyclonal
Source	Rabbit
Uniprot ID	O76094
Entrez	6731
Dilution Range	WB (1/500 - 1/1000), IH (1/50 - 1/200), IF/IC (1/10 - 1/50), FC (1/10 - 1/50)
Expiration Date	12 months from date of receipt.



Western blot analysis of SRP72 expression...



Immunohistochemical analysis of SRP72 st...



Immunofluorescent analysis of Anti-SRP72...