

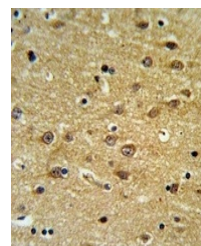
## Product Datasheet

### Anti-EHD3 Antibody (orb1879524)

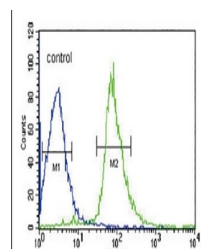
<b>Description</b>	Rabbit polyclonal antibody to EHD3
<b>Reactivity</b>	Human, Mouse
<b>Conjugation</b>	Unconjugated
<b>Tested Applications</b>	FC, IH, WB
<b>Immunogen</b>	KLH-conjugated synthetic peptide encompassing a sequence within the N-terminal region of human EHD3. The exact sequence is proprietary.
<b>Form/Appearance</b>	Liquid in 0.42% Potassium phosphate, 0.87% Sodium chloride, pH 7.3, 30% glycerol, and 0.01% sodium azide.
<b>Storage</b>	Shipped at 4°C. Upon delivery aliquot and store at -20°C for one year. Avoid freeze/thaw cycles.
<b>Note</b>	For research use only
<b>Clonality</b>	Polyclonal
<b>Source</b>	Rabbit
<b>Uniprot ID</b>	<a href="#">Q9NZN3</a> , <a href="#">Q9QXY6</a>
<b>Entrez</b>	<a href="#">30845</a> , <a href="#">57440</a>
<b>Dilution Range</b>	WB (1/500 - 1/1000), IH (1/50 - 1/200), FC (1/10 - 1/50)
<b>Expiration Date</b>	12 months from date of receipt.



Western blot analysis of EHD3 expression...



Immunohistochemical analysis of EHD3 sta...



Flow cytometric analysis of HepG2 cells ...