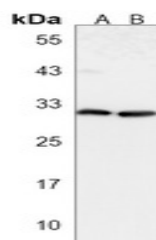


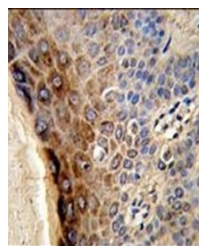
Product Datasheet

Anti-CTHRC1 Antibody (orb1879464)

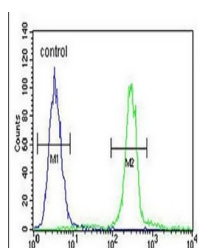
Description	Rabbit polyclonal antibody to CTHRC1
Reactivity	Human
Conjugation	Unconjugated
Tested Applications	FC, IH, WB
Immunogen	KLH-conjugated synthetic peptide encompassing a sequence within the N-terminal region of human CTHRC1. The exact sequence is proprietary.
Form/Appearance	Liquid in 0.42% Potassium phosphate, 0.87% Sodium chloride, pH 7.3, 30% glycerol, and 0.01% sodium azide.
Storage	Shipped at 4°C. Upon delivery aliquot and store at -20°C for one year. Avoid freeze/thaw cycles.
Note	For research use only
Clonality	Polyclonal
Source	Rabbit
Uniprot ID	Q96CG8
Entrez	115908
Dilution Range	WB (1/1000 - 1/2000), IH (1/50 - 1/200), FC (1/10 - 1/50)
Expiration Date	12 months from date of receipt.



Western blot analysis of CTHRC1 expressi...



Immunohistochemical analysis of CTHRC1 S...



Flow cytometric analysis of A375 cells U...