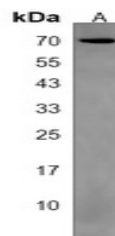


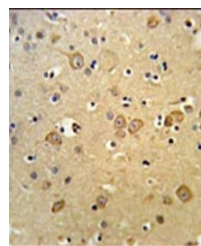
## Product Datasheet

### Anti-LRRTM1 Antibody (orb1879379)

<b>Description</b>	Rabbit polyclonal antibody to LRRTM1
<b>Reactivity</b>	Human, Mouse
<b>Conjugation</b>	Unconjugated
<b>Tested Applications</b>	IH, WB
<b>Immunogen</b>	KLH-conjugated synthetic peptide encompassing a sequence within the Central region of human LRRTM1. The exact sequence is proprietary.
<b>Form/Appearance</b>	Liquid in 0.42% Potassium phosphate, 0.87% Sodium chloride, pH 7.3, 30% glycerol, and 0.01% sodium azide.
<b>Storage</b>	Shipped at 4°C. Upon delivery aliquot and store at -20°C for one year. Avoid freeze/thaw cycles.
<b>Note</b>	For research use only
<b>Clonality</b>	Polyclonal
<b>Source</b>	Rabbit
<b>Uniprot ID</b>	<a href="#">Q8K377</a> , <a href="#">Q86UE6</a>
<b>Entrez</b>	<a href="#">347730</a> , <a href="#">74342</a>
<b>Dilution Range</b>	WB (1/500 - 1/1000), IH (1/50 - 1/200)
<b>Expiration Date</b>	12 months from date of receipt.



Western blot analysis of LRRTM1 expressi...



Immunohistochemical analysis of LRRTM1 S...